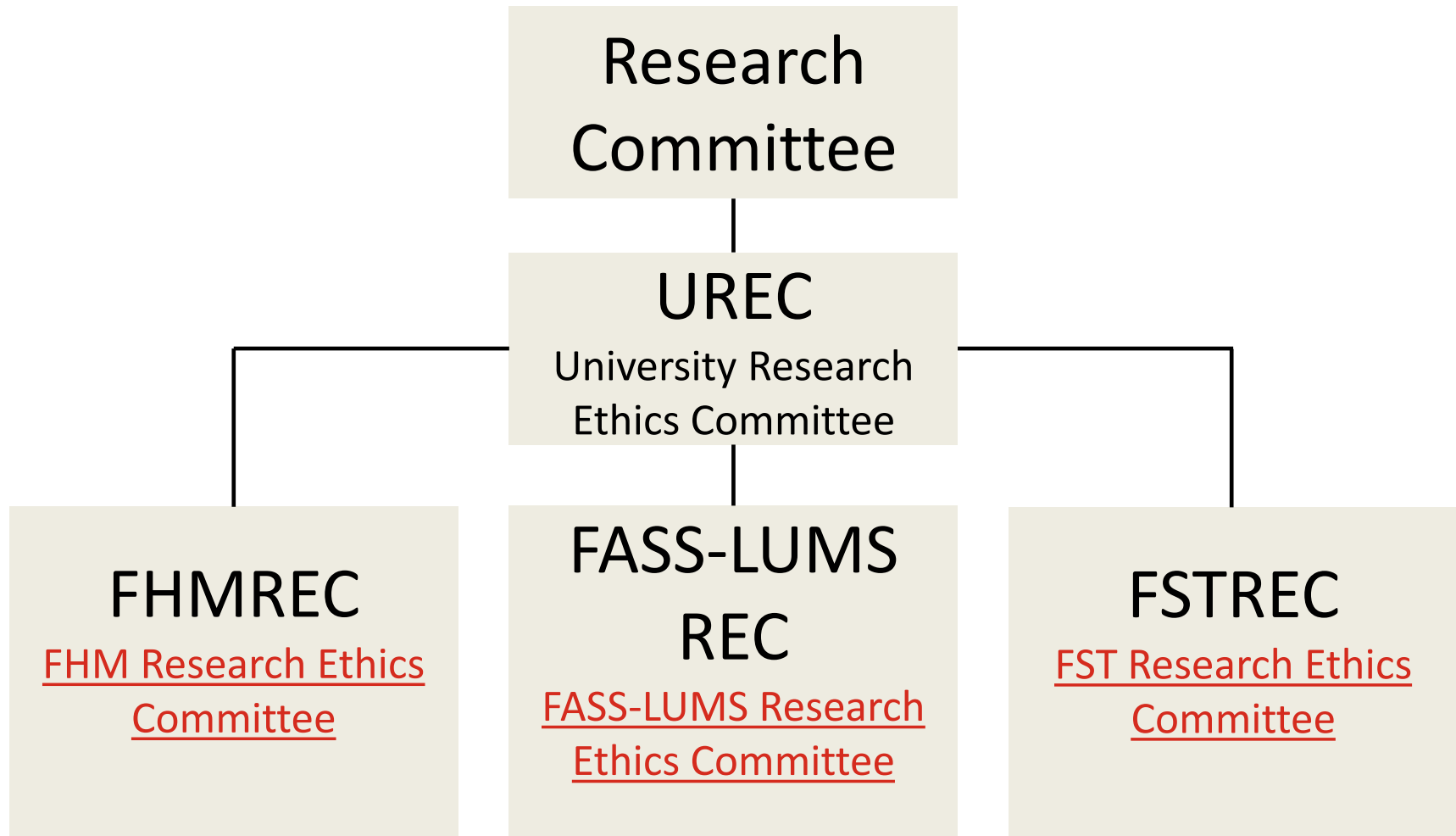


Ethical Review at Lancaster University: an overview

Tuesday 21st March 2017

Dr Diane Hopkins, Debbie Knight & Becky Case

Lancaster University Ethics Committee Structure



Why bother?

- LU policy ([Code of Practice](#))
- University assurance
- Insurance cover
- Meet funder(s) requirements
- Publishers
- PhD Viva
- Protection of researcher
- Protection of human participants (if involved)

Ethical review is needed if...

...your research involves any of the following:

- Human participants
- Animals
- Risk to members of research team (e.g. lone working)
- Human cells or tissues
- Risk to the environment
- Conflict of interest
- Research or a funding source that could be considered controversial
- Social media and/or data from internet sources that could be considered private
- Any other ethical considerations

Committee processes

- Chairs action
 - Amendment to previously approved research
 - Prior approval from an external REC
 - Secondary data
- Review by committee members and approval by Chair
- Full committee review
 - For research that raises complex ethical issues
- NHS/HRA approval

Contact details

Diane Hopkins, tel: 92838, fhmresearchsupport@lancaster.ac.uk, B14 Furness College.

Debbie Knight, tel: 92605, fass.lumsethics@lancaster.ac.uk, D22 FASS Building.

Becky Case, tel: 93987, fst-ethics@lancaster.ac.uk, B33 FST Building.